

# ANY WAY YOU WANT IT

DRUM SET

Musical notation for the first staff of the drum set part, starting with a common time signature (C). It features a series of eighth and sixteenth notes with various accents and dynamics.

Musical notation for the second staff of the drum set part, continuing the rhythmic pattern with accents and dynamics.

6

Musical notation for the third staff of the drum set part, continuing the rhythmic pattern with accents and dynamics.

11

Musical notation for the fourth staff of the drum set part, continuing the rhythmic pattern with accents and dynamics.

16

Musical notation for the fifth staff of the drum set part, continuing the rhythmic pattern with accents and dynamics.

21

Musical notation for the sixth staff of the drum set part, continuing the rhythmic pattern with accents and dynamics.

26

Musical notation for the seventh staff of the drum set part, continuing the rhythmic pattern with accents and dynamics.

31

36

41

46

51

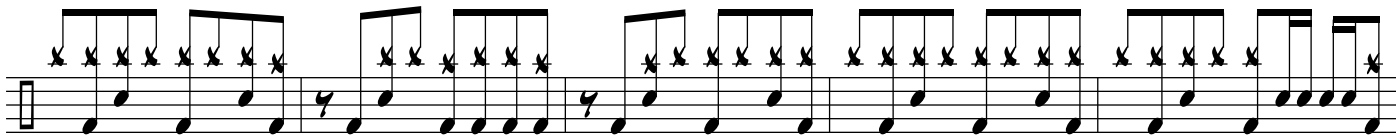
56

61

66

71

76



81



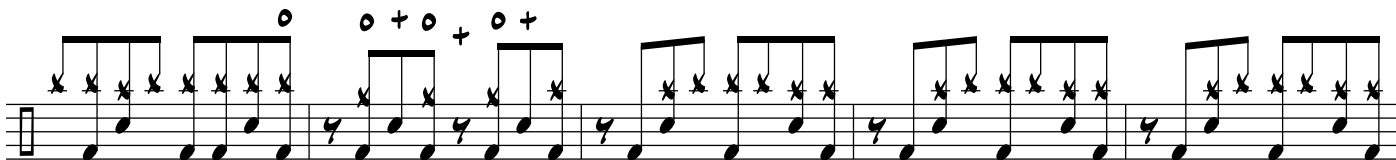
86



91



96



101



106



111